

PROFESSIONAL OFFICE SPACE

+ 120-170 RSF PRIVATE OFFICES WITHIN SHARED SPACE



4875 E. LA PALMA AVE., SUITE 603, ANAHEIM, 92807

About: Executive style office suites available
Shared common areas
Professional office environment

Features:

- Signage opportunity
- Access to share conference room, coffee bar, break area
- Wi-Fi included in monthly lease rate
- Use of certified shredding
- Front and rear entrances and parking
- Receptionist (call for details)
- 24/7 Access

Location:

- On La Palma Avenue
- Convenient freeway access
- Near many local eateries

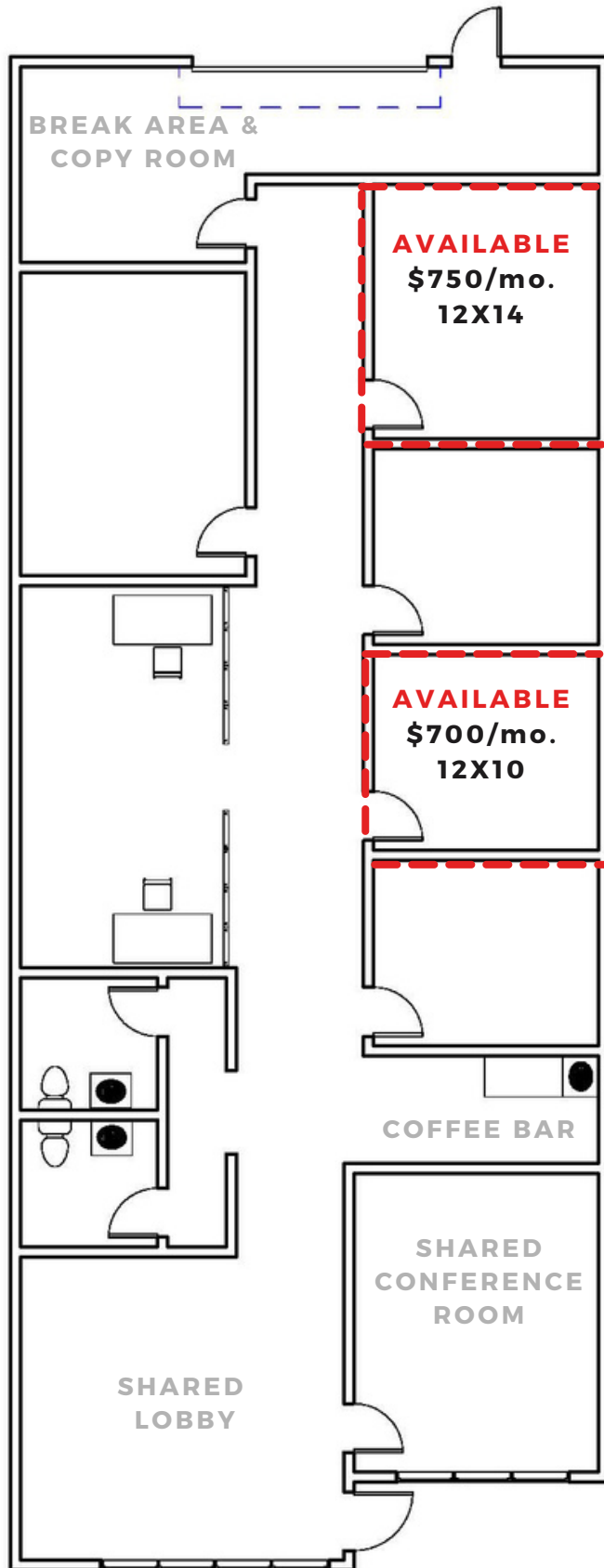


CHANTEL AGUILAR
(562) 447-0665
CHANTEL@ASHWILLASSOCIATES.COM
CORP DRE#01291393/LIC.#01972085



AVAILABILITY

PRIVATE OFFICE SPACES



FEATURES

- WI-FI INCLUDED
- ACCESS TO CONFERENCE ROOM
- SIGNAGE OPPORTUNITY
- COFFEE BAR
- CERTIFIED SHREDDING
- 24/7 ACCESS



PARKING

- FRONT AND REAR BUILDING PARKING
- FREE PARKING



PROFESSIONAL OFFICE

- WELL MAINTAINED & CLEAN OFFICE
- FULLY RENOVATED IN 2009
- FRONT AND REAR ENTRANCES



LOCATION

- ON DESIRABLE LA PALMA AVENUE
- ANAHEIM HILLS (92807)
- NEAR MANY LOCAL EATERIES



ACCESS

- CONVENIENT FREEWAY ACCESS



CHANTEL AGUILAR
(562) 447-0665
CHANTEL@ASHWILLASSOCIATES.COM
CORP DRE#01291393/LIC.#01972085

FLOORPLAN NOT TO SCALE



PHOTOS

4875 E. LA PALMA AVE. SUITE 603, ANAHEIM

Ashwill Associates

COMMERCIAL REAL ESTATE



EXTERIOR



HALLWAY



OFFICE



CONFERENCE



COFFEE BAR



CHANTEL AGUILAR
(562) 447-0665
CHANTEL@ASHWILLASSOCIATES.COM
CORP DRE#01291393/LIC.#01972085